

# **BLACKTOWN CITY 100<sup>th</sup> ANNUAL SHOW 2024**

**Blacktown Showground**

**Saturday 9<sup>th</sup> March & Sunday 10<sup>th</sup> March 2024**

**Opening Times**

**Saturday 9 am to 10 pm**

**Sunday 9 am to 4 pm**

**Supported by**

**Blacktown City Council**

**[www.blacktownshow.au](http://www.blacktownshow.au)**

## Index

### Page

- 2. Index
- 3. Terms and conditions
- 4. Prizes and Contacts re-entries
- 5. Junior Cooking
- 6-9. Adult Cooking
- 10. Junior Textiles and design {knitting, patchwork etc}
- 11-14 Adult Textiles
- 15. Knitters Guild
- 16-17 Junior Art {oils, water, landscapes etc}
- 18. Adult Art
- 19-20. Junior Craft {pottery, woodwork, jewellery etc}
- 21-24 Entry Forms
- 25-26. Adult Craft
- 27. Junior Photography
- 28. Adult Photography
- 28. 100<sup>th</sup> Blacktown Show Junior/Adult Photography Competition.
- 29 Blacktown Arts and Craft Group Contact information
- 30. Free Kids Competition sponsored by Blacktown Arts and Crafts
- 31-32. Junior Horticulture {plants, roses, vegetables etc}
- 33-35 Adult Horticulture
- 36. Birds
- 37. Blacktown Show Society
- 38. Blacktown City Council
- 39. Thanks to Supporters

## TERMS AND CONDITIONS OF ENTRY

**All Exhibits:** Must be the original work of the exhibitor, completed within the last 12 months and must be ready for display, unless stated otherwise. **Item must not have been worn/used. For double-sided entries please indicate which side is to be displayed.**

**All Entries are to be bought in via the Kent St entry point.**

**Entry Fee:** Seniors \$2 per entry and juniors \$1 per entry.

**Exhibits Collection:** All exhibits must remain on display for the duration of the show, including items sold, and can only be picked up between 4-5pm Sunday, or Tuesday and Wednesday between 9 am-12pm at the Trevor Toms Pavilion.

**General Entries:- Art, Crafts, and Needlework** will be accepted on Monday 4th and Tuesday 5th of March 2024 between 5 pm and 8 pm. The craft entries are to be taken to the Trevor Toms Pavilion, Artwork to the Pam Green Pavilion, and Needlework to the Needlework Pavilion. Any item received soiled, damaged or washed (with the exception of spun or woven items) will not be accepted.

**Cooking Entries:** To be delivered to the Needlework Room between 8 am and 10am on Friday 8th March 2024

**Horticulture entries by phone. Gretel 0409138453**

**Photography entries:** Dinning Room building **Bronwyn 0411546801**

**Only one pass will be issued to an exhibitor for five entries or more in any one Category.**

Classes will only be judged and prizes awarded if there are 3 or more entries in the class. A judge may overrule this condition if the judge deems the entry to be of a high standard.

**Entry Forms:** A copy of your entry form/s must be retained by the exhibitor for the collection of your exhibits. Multiple entries per section/s on one form are allowed.

**Maximum of 5 entries per person per section unless stated otherwise**

**Prize Money:** Prize money will only be issued after 4pm on Sunday 10th March or between 9am to 12pm on Monday or Tuesday at the Trevor Tom's Pavillion

**Exhibits:** All exhibit and entry forms must be marked either **Not for Sale (NFS)** or **For Sale** with the price clearly marked.

**Judging:** Judges reserve the right to re-classify an entry with the judge's decision being final. No correspondence will be entered into.

**Security:** All reasonable care is taken to ensure no loss or damage to exhibits left in our care. However, no responsibility will be taken by the Blacktown City Show Society Inc. for any loss or damage to any exhibit.

## **PRIZES JUNIOR CATEGORIES**

1<sup>st</sup> place \$5.00

2<sup>nd</sup> place \$3.00

Place cards and ribbons will be awarded to 1<sup>st</sup>, 2<sup>nd</sup> and 3<sup>rd</sup>

A certificate is awarded for every junior entry.

BEST EXHIBITS \$25.00

All prizes are kindly donated by Blacktown City Council.

Sponsorship prizes may be awarded – see section s for detail

## **PRIZES ADULT CATEGORIES**

1<sup>st</sup> place \$10.00

2<sup>nd</sup> place \$5.00

Place cards and ribbons will be awarded to 1<sup>st</sup>, 2<sup>nd</sup> and 3<sup>rd</sup>

BEST EXHIBITS \$50.00

All prizes are kindly donated by Blacktown City Council.

Sponsorship prizes may be awarded – see section s for detail

## **Contacts**

{For enquiries regarding entries}

COOKING: Caroline C 0403453707

TEXTILES: Caroline C 0403453707

ART: Dawn 9654 0570 or 0402922659

POTTERY: Caroline 9624 4879 or 0403354162

CRAFT: Marty 0419297750

Woodwork: KEITH 0401710201

HORTICULTURE: Veronica 0412776742 or Gretel 0409138453

PHOTOGRAPHY: Bronwyn 0411546801

BIRDS: Greg 0419203237

**[www.blacktownshow.com.au](http://www.blacktownshow.com.au)**

## **SECTION 1: COOKING - JUNIOR**

### **Condition of entry**

1. The exhibit must be completed while attending school within the last 12 months with the corresponding age on the entry form.
2. All jars and lids to have no advertising or brand names. The standard size jar is not less than 250 grams.

The cooking pavilion is open for viewing 9am to 6pm Saturday 9<sup>th</sup> and 9am to 3pm Sunday 10<sup>th</sup>.

### **Preserves, Jams, Jellies and Conserve**

#### **Primary School Class**

1. Jam
2. Pickle/chutney/relish
3. Preserve
4. Students with disabilities

#### **Secondary School**

5. Jam
6. Pickle/chutney/relish
7. Preserve
8. Students with disabilities

### **Junior Cakes**

All cakes are to be iced on top only. Unless otherwise Specified

#### **Primary School Class**

9. Iced Packet Cake
10. Scones – Plate of 4
11. Biscuits of own choice, 6pcs
12. Cup Cakes-iced-plate of 6
13. Slice of own choice, 6 pcs
14. Muffins – a plate of 4
15. Any cake iced & decorated
16. Junior creation - moulding
17. Students with disabilities

#### **Secondary School**

18. Iced Packet Cake
19. Scones – Plate of 4
20. Biscuits of own choice, 6pcs
21. Cup Cakes-iced - a plate of 6
22. Slice of own choice, 6 pcs
23. Muffins – plate of 4
24. Any cake iced & decorated
25. Junior creation - moulding
26. Students with disabilities

#### **5 Years and Under**

27. Decorated milk arrowroot oval biscuits or cupcakes
28. Three triangles of fairy bread
29. Students with disabilities

### **Blacktown Council Awards \$25.00**

- Best Exhibit class 1-4  
Best Exhibit class 9-17

- Best Exhibit class 5-8  
Best Exhibit class 18-26

## **SECTION 2: COOKING - ADULT**

### **Preserves, Jams, Jellies and Conservees**

#### **Condition of entry**

1. Exhibits to be in standard jars not less than 250gms. All exhibits must be sealed correctly. Plain lids and jars only, no advertising.

The cooking pavilion is open for viewing 9am to 6pm Saturday 9<sup>th</sup> and 9am to 3pm Sunday 10<sup>th</sup>.

#### **Class**

- |                             |                              |
|-----------------------------|------------------------------|
| 30. Bottled fruits          | 37. Mustard Pickles          |
| 31. Bottled vegetables      | 38. Fruit Butter             |
| 32. Berry Jam               | 39. Apple Jelly              |
| 33. Stone fruit Jam         | 40. Any Other Jam            |
| 34. Citrus Jam or Marmalade | 41. Any Other Sauce          |
| 35. Tomato Sauce            | 42. People with Disabilities |
| 36. Chutney/Relish          |                              |

#### **Blacktown Council Awards**

Best Exhibit 30- 42



## CAKES

### **Conditions of Entry**

No factory-made or packet mixes will be allowed, nor will professional cakemakers or cake shop proprietors be eligible.

All bakery items are to be presented on a board or a plate.

### **Class**

- |                                    |  |
|------------------------------------|--|
| 48. Marble Cake (top iced only)    | 59. Plain Sponge Sandwich<br>(jam filling only)          |
| 49. Date and Walnut Loaf           | 60. Plum Pudding (steamed)                               |
| 50. Plain Scones (plate of 6)      | 61. Rich Fruit Cake (un-iced)                            |
| 51. Pumpkin Scones (plate of 6)    | 62. Boiled Fruit Cake (un-iced)                          |
| 52. Damper                         | 63. Slice of Own Choice (6 pcs)                          |
| 53. Pikelets (plate of 6)          | 64. People with disabilities                             |
| 54. Biscuits (plate of 6)          | 65. ASC of NSW Rich Fruit Cake<br>(see recipe next page) |
| 55. Patty Cakes (plate of 4)       | 66. Any other Cake                                       |
| 56. Banana Cake (top iced only)    | 67. Gluten Free Cake                                     |
| 57. Chocolate Cake (top iced only) |  |
| 58. Sultana Cake                   |  |



## ASC Fruit cake

The following recipe is compulsory for entrants in class 65

### Rich Fruit Cake

#### Ingredients

- 250gms sultanas
- 250gms chopped raisins
- 250gms currants
- 125gms chopped mixed peel
- 90gms chopped red glace cherries
- 90gms chopped blanched almonds
- 1/3 cup sherry or Brandy
- 250gms plain flour
- 60gms self-raising flour
- ¼ tsp grated nutmeg
- ½ tsp ground ginger
- ½ tsp ground cloves
- 250gms butter
- 250gms soft brown sugar
- ½ tsp lemon essence **OR** finely grated lemon rind
- ½ tsp almond essence
- ½ tsp vanilla essence
- 4 large eggs

#### Here is what to do;

Mix together all the fruits and nuts and sprinkle with the sherry or brandy.

Cover and leave for at least one hour but preferably overnight.

Sift together the flours and spices. Cream together the butter and the sugar with the essences. Add the eggs one at a time, beating well after each addition, then, alternately add the fruit and the flour mixtures.

Mix thoroughly. The mixture should be stiff enough to support a wooden spoon. Place the mixture into a prepared **square 20cm x 20cm (8" x 8") tin** and bake in a slow oven for approx. 3.5 - 4 hours. Allow to cool in the tin.

Note: To ensure uniformity and depending upon the size it is suggested the raisins be snipped into 2 or 3 pieces, cherries into 4 – 6 pieces and almonds crosswise into 3 -4 pieces.

**Judge Note: The height of the cake should not exceed 5.7cm (57mm)**

**ASC Fruit Cake must be cooked in a 20cm x 20cm square tin**



## **ICING & DECORATING**

### **Conditions of Entry**

Exhibitors are limited to one entry only in the following classes.

### **Class**

- 66. Wedding cake, no less than two tiers, iced and decorated.
- 67. Novelty cake, iced and decorated, not to be cut.
- 68. Special occasion cake, iced and decorated, not to be cut.
- 69. Novice, any cake iced and decorated, not to be cut. Open only to exhibitors who have not won a first, second or third prize in an icing or decorating section in any previous agricultural or cooking competition.
- 70. Presentation of sugar flowers
- 71. People with disabilities

### **Blacktown Council Awards \$50.00**

Best exhibit class 48-64

Best Exhibit class 66-71



## **SECTION 3: TEXTILE & DESIGN - JUNIOR**

### **Condition of entry**

1. All exhibits must be the entrant's own work adult supervision is allowed.
2. For collection of entries after the show see page 3.
3. The needlework pavilion is open for viewing 9am to 6pm Saturday 9<sup>th</sup> and 9am to 3pm Sunday 10<sup>th</sup>.

### **Primary School**

#### **Class**

1. Any cultural article
2. Crochet/Knitted any article
3. Machine-made article
4. Any handmade article
5. Any other creative design
6. Student with disabilities

### **Secondary School**

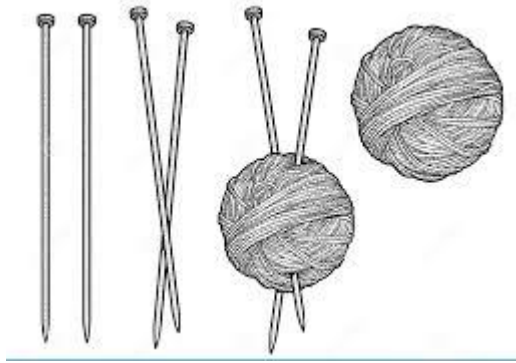
#### **Class**

7. Any cultural article
8. Crochet/Knitted any article
9. Machine made article
10. Any Handmade article
11. Any other creative design
12. Student with disabilities

### **Blacktown Council Awards \$25.00**

Best exhibit class 1-6

Best exhibit class 7-12



## **SECTION 4: TEXTILES & DESIGN - ADULT**

### **Conditions of Entry**

1. "Beginner" is a person with not more than 12 months experience. Exhibits may be reclassified after entry.
2. For collection of entries after the show see page 3.
- 3 The prizes in classes. 31-41 and 42-56 will also be awarded a sponsored prize of \$30 1<sup>st</sup> place and \$15 2<sup>nd</sup> place

### **Donated by the Blacktown branch of the Knitters Guild.**

The needlework pavilion is open for viewing 9am to 6pm Saturday 9<sup>th</sup> and 9am to 3pm Sunday 10<sup>th</sup>.

### **NEEDLEWORK**

#### **Class**

13. Patchwork - quilt hand pieced-hand quilted (e.g., paper pieced)
14. Patchwork - quilt machine pieced and quilted by entrant
15. Patchwork - machine appliqued quilt
16. Patchwork - hand-appliqued quilt
17. Patchwork - wall hanging
18. Scrappy quilt - a quilt made from left-over fabrics
19. Patchwork - quilt professionally quilted
20. Patchwork - cushion, bag etc
21. Patchwork - any other article
22. Patchwork - beginner 12 months and under
23. Machine embroidery - any article
24. Hand Embroidery - any article
25. People with disabilities

### **MISCELLANEOUS**

#### **Class**

26. Tailored or fancy cushion-filled
27. Machine made - Adult/Child Garment
28. Tatting
29. Any other article
30. People with disabilities

## **KNITTING - HAND**

### **Class**

31. Any babywear (hat, bonnet, socks.)
32. Baby Garment (dress, overall, cardigan.)
33. Child's garment
34. Ladies/gents garment
35. Afghan, knee rug or throw-over.
36. Homewares {cushions, tea cosies}
37. Toys
38. Neck/Headwear {scarves, shawls, hats}
39. Leg/footwear {socks, leg warmers, slippers}
40. Baby Shawl/blanket
41. Any other article not mentioned above.
42. People with disability

## **CROCHET**

### **Class**

43. Baby's bonnet and booties, hats
44. Baby's dress, jumper or cardigan
45. Baby's 3-piece garment
46. Doyley, Duchess set, runner
47. Napery - any article
48. Baby's shawl
49. Knee rug, afghan or throw
50. Adult garment
51. Child garment
52. Homewares [ cushion, tea cosy, rug}
53. Toys
54. Neck/headwear {scarves, shawls, hats}
55. Leg/footwear {socks, legwarmers, slippers}
- 56 Any other article not mentioned above
57. People with disabilities

## **KNITTING - MACHINE**

### **Class**

58. Any article - baby wear.
59. Adult jumper or cardigan
60. Rug, shawl or scarf, no seams
61. Child's garment.
62. Any other article not mentioned above (e.g., rugs, throw-over, no seams)
63. People with disabilities
64. **Wool article/garment state competition (see note and entry conditions below)**

**Note: The winner of the wool article/garment at Blacktown Show 2024 will progress to the group final, The winner Group final will progress to Royal in 2024**

### **Conditions of entry for wool article/garment**

#### **Competition to be conducted at society, group and state levels.**

1. Three different types of wool articles and/or garments.

**Garment:** an item that can be worn e.g., dress, jacket, scarf, hat.

**Article:** a utility item that is not worn but can be used at home e.g., blanket, bag for amusement, toy as a decoration, picture etc.

2. **Three different types:** The three items in an entry must differ from each other in terms of their construction and/or purpose.

**EXAMPLE 1.** A knitted jumper, blanket and tea cosy.

**EXAMPLE 2.** A knitted tea cosy, a crocheted tea cosy, a felted tea cosy.

**EXAMPLE 3.** A knitted jumper, a knitted blanket and a crocheted blanket.

3. The **WHOLE** article and/or garment must be constructed of and contain a **minimum of 80% wool**.
4. A sample of yarn, fabric or fibre with label attached to each item making up the exhibit.
5. If label is not available as a hand-spun/ felted, a handwritten label with the relevant details and a sample will suffice.
6. An exhibit in this competition may consist of work of one individual or a group of individuals or an organization.
7. All three articles/garments must have been completed in the last 12 months and made by the exhibitor.

8. An exhibit, having won at the local show will be exhibited (i.e., the same three articles/garments) at the group final. The winning exhibit at the group level is then eligible to compete at the State final.
9. An exhibit is only eligible to represent one society at group level and one group at state level.
10. An exhibit article/garment that has been previously competed at group level is not permitted to compete again.
11. If this class attracts no entries at a local show the Steward may, in consultation with the Judges, select three suitable individual exhibits and with the exhibitor's permission, enter them in the group final as an exhibit representing the particular society concerned.
12. It is the responsibility of the society secretary and winner to coordinate the transfer of the winning entry to the group final.
13. It is the responsibility of group secretary and winner to coordinate transfer of winning group entry to the ASC office in Sydney for state judging.

#### TAPESTRY (any size, no glass)

##### **Class**

65. Beginner's tapestry - completed within the last 12 months
66. Framed tapestry - any theme
67. Framed tapestry - petite point only, one thread
68. Creative tapestry - 2 or more stitches, 2 or more threads
69. Framed tapestry - long stitch
70. Any other article (e.g., stool, doorstop, etc.)
71. Bargello - geometric on canvas
72. Tapestry - continental
73. People with disabilities

##### **Blacktown Council Awards \$50.00**

- Best exhibit class 13-30
- Best exhibit class 31-42
- Best exhibit class 43-57
- Best exhibit class 58-63
- Best exhibit class 65-73



**Knitters' Guild NSW**

## **Many Thanks to the**

**Knitters Guild [Blacktown Group] for kindly organizing and running the  
Textile sections of the Blacktown City Show.**

## **SECTION 5: ART - JUNIOR**

### **Conditions of Entry**

1. All exhibits must be suitably framed and ready for hanging with the name and address of the exhibitor on the back.
2. **Maximum size 60 cm x 80cm.**
3. All entries must have been completed within the last 12 months.
4. Limit of 5 entries per person.

### **Class**

1. Painting, drawing, any medium, Year 1-3
2. Aboriginal art, Year 1-3
3. Student with disabilities, Year 1-3
4. Painting, drawing, any medium, Year 4-6
5. Aboriginal Art, Year 4-6
6. Student with disabilities, Year 4-6
7. Drawing, painting any medium, Year 7-10
8. Aboriginal Art, Year 7-10
9. Student with disabilities, Year 7-10
10. Drawing, painting any medium, Year 11-12
11. Aboriginal Art, Year 11-12
12. Students with disabilities, Year 11-12

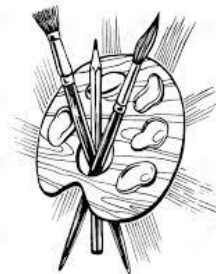
### **Blacktown Council Awards \$25.00**

Best exhibit class 1-3

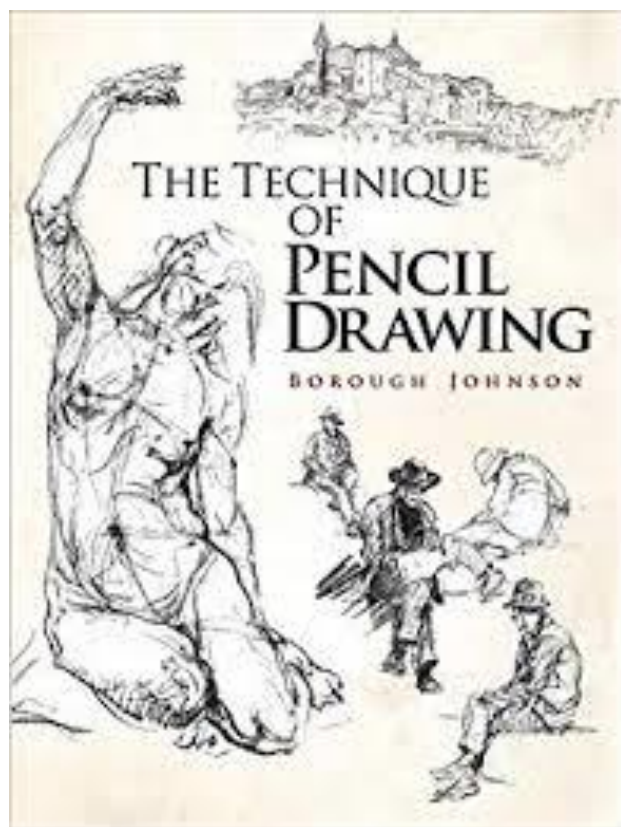
Best exhibit class 7-9

Best exhibit class 4-6

Best exhibit class 10-12







## SECTION 6: ART - ADULT

### **Conditions of Entry**

1. All exhibits must be suitably framed and ready for hanging with the name and address of the exhibitor on the back.
- 2. Maximum size 60 cm x 80cm.**
3. All entries must have been completed within the last 12 months.
4. Limit of 5 entries per person.
5. For the collection of entries after the show see page 3.

### **Class**

13. Landscape, oil or acrylics
14. Landscape, any other medium
15. Still life, any medium
16. Seascape, any medium
17. Portrait, any medium
18. Abstract, any medium
19. Graphics - ink, pencil, chalks etc
20. Birds and animals, any medium
21. Watercolour
22. Street scene, any medium
23. Mixed medium
24. Our Blacktown City, any medium
25. Indigenous Art
26. Any Other Genre
27. Adult with disabilities.

### **Blacktown Council Awards \$50.00**

Best exhibit class 13-27

## SECTION 7: CRAFT – JUNIOR

### Condition of entry

1. All exhibits must be the entrant's own work; adult supervision is allowed.
2. For the collection of entries after the show see page 3.

### Class

#### YEARS 1-3

1. Pottery any item
2. Any pottery item hand-built by beginners
3. Any pottery item hand-built over 12 months of experience
4. Woodwork any item
5. Scrapbooking any item. **Full names or photos of Children are not allowed**
6. Multicraft handmade using paper
7. Multicraft handmade using wood
8. Multicraft handmade using metal
9. Multicraft handmade using fabric
10. Upcycled or recycled item
11. Item in any class student with a disability
12. Any entry depicting or informs on history, architecture, persons, groups, events or organisations specific to Blacktown
- 13 Diamond art
- 14 Resin work

#### YEARS 4-6

15. Pottery any item
16. Any pottery item hand-built by a beginner.
17. Any pottery item hand-built with over 12 months of experience
18. Woodwork any item
19. Scrapbooking any item, **Full names or photos of Children are not allowed**
20. Multicraft handmade paper
21. Multicraft handmade wood
22. Multicraft handmade metal
23. Multicraft handmade fabric
24. Upcycled or recycled item
25. Item in any class student with a disability
26. Diamond art
27. Resin work

## **Years 7-10**

28. Pottery any item
29. Any pottery item hand-built by a beginner.
30. Any pottery item hand-built with over 12 months of experience
31. Woodwork any item
32. Scrapbooking any item. **Full names or photos of Children are not allowed**
33. Multicraft handmade paper
34. Multicraft handmade wood
35. Multicraft handmade metal
36. Multicraft handmade fabric
- 37 Upcycled or recycled item
38. Item in any class student with a disability
39. Diamond Art
40. Any entry depicting or informs on history, architecture, persons, groups, events or organisations specific to Blacktown
41. Resin work

## **Years 11-12**

42. Pottery any item
43. Any pottery item hand-built by a beginner.
44. Any pottery item hand-built with over 12 months of experience
405. Woodwork any item
- 46 Scrapbooking any item. **Full names or photos of Children are not allowed**
47. Multicraft handmade paper
48. Multicraft handmade wood
49. Multicraft handmade metal
50. Multicraft handmade fabric
51. Upcycled or recycled item
52. Item in any class student with a disability
53. Resin work
54. Diamond art
55. Any entry depicting or informs on history, architecture, persons, groups, events or organisations specific to Blacktown

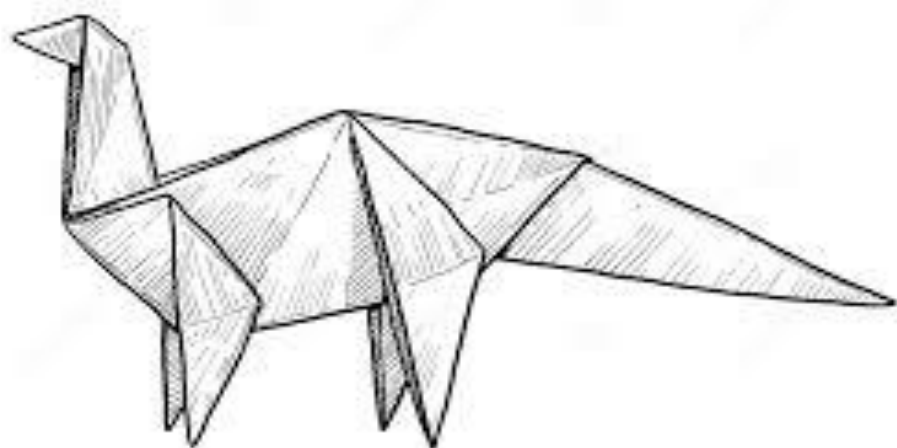
## **Blacktown Council Awards \$25.00**

Best exhibit class 1-14

Best exhibit class 28-41

Best exhibit class 15-27

Best exhibit class 42-55



# Blacktown City Show Society Inc.

**ENTRY FORM**

Entry forms **MUST** be completed in **DUPLICATE** and **BOTH** copies handed in with your exhibits at the time of entry.

Section	Class	Description of Exhibit e.g. technique, colour, material used, shape	Entry Fee	Sale Price

**I hereby enter above, subject to the Rules and Regulations of the Society.**

Please Print

Title: Mr. Mrs. Miss (Please circle one)

Child Age: .....

Name: .....

Address: .....

Post Code: .....

Date: .....

Phone No.....

Email.....

**Blank page**

# Blacktown City Show Society Inc.

## ENTRY FORM

Entry forms **MUST** be completed in **DUPLICATE** and **BOTH** copies handed in with your exhibits at the time of entry.

Section	Class	Description of Exhibit e.g. technique, colour, material used, shape	Entry Fee	Sale Price

**I hereby enter above, subject to the Rules and Regulations of the Society.  
Please Print**

**Title: Mr. Mrs. Miss (Please circle one)**

**Child Age: .....**

Name: .....

Address: .....

Post Code: .....

Date: .....

Phone No.....

Email.....



## **SECTION 8: CRAFT - ADULT**

### Conditions of Entry

1. The exhibit must be all entrant's own work and completed in the last 12 month
2. For collection of entries after the show see page 3.

### **Class**

51. Pottery wheel thrown - beginner.
52. Pottery wheel thrown - over 12 months experience.
53. Pottery hand-built beginner
54. Pottery hand-built with over 12 months experience
55. Adult garment, knitted or crocheted, made entirely of hand-spun yarn.  
Attach a 15cm piece of yarn.
56. Any article made from hand-woven or hand-spun yarn (e.g., fashion accessory).
57. Specimen of hand-spun yarn, not less than 100gms. State purpose.
58. Hand-painted porcelain and or ceramics.
59. Folk Art - beginner.
60. Folk Art – over 12 months experience
61. Bead Work.
62. Silk Painting - framed art
63. Silk painting - mounted, not framed.
64. Silk Painting - wearable article.
65. Hand Made Jewellery
66. Indigenous craft.
67. Multicraft handmade using paper
68. Multicraft handmade using wood
69. Multicraft handmade using metal
70. Multicraft handmade using fabric
71. Upcycled or recycled item
72. Scrapbooking any item. **Full Names or photos of Children are not allowed**
73. People with disabilities. Any class
74. Diamond Art
75. Resin Work - any item
76. Any entry depicting or informs on history, architecture, persons, groups, events or organisations specific to Blacktown

### **Blacktown Council Awards \$50.00**

Best exhibit class 51 - 76

## Woodwork competitions

*All entries must have been completed within the last 18 months unless stated.*

### Class

**52 Wood Turning** –Novice turned Article -Novice is limited to 2 years experience and must not have entered competitions before.

**53. Wood Turning** - Open Turned Bowl, turned lidded box,  
turned Platter, segmented turned bowls,  
Laminated Bowls

**54. Woodturning** - Spindle work, wooden Walking stick,  
Pens and pencils  
(pen or pencils must be capable of producing writing)

**55. Woodwork** - Carving Any Article Free Form.  
Carved wooden Walking stick  
Entry must have been Carved and completed in the last 24 months

**56. Woodwork** - Non-turned Wooden Box , clocks  
Laminated platter/cutting board

**57. Wood Turning Ornamental** - turned Bowls, spindle, Platters

**58. Wood Work** - Band saw Box Scroll saw work, Clocks

**59. Woodwork** - Wooden toy, or any wooden article not included in the above classes.

**60. Woodwork** - People with disabilities - All forms of woodwork accepted

### **Blacktown Council Awards \$50.00**

Best Exhibit Class 52 to 60

### **Sponsor Awards \$50.00**

**Best Exhibit Class 52**

**Cumberland Woodworkers Inc**

**Best Exhibit Class 59-60**

**Pain & Waller Solicitors**

## **Section 9: PHOTOGRAPHY – AMATEUR – JUNIOR**

### **Conditions of entry**

1. All photographs to be taken by the exhibitor
2. All exhibits should be mounted on cardboard and ready to hang
3. Maximum of 5 entries per class
4. Minimum size including mount 12.5cm x 17.5cm
5. Maximum size including mount 40cm x 50cm
6. For collection of entries after the show see page 3.

<b>Primary Class</b>	<b>Secondary Class</b>
1. Print “open” - monochrome	10. Print “open” - monochrome
2. Landscape/Seascape - monochrome	11. Landscape/Seascape - monochrome
3. Portrait - monochrome	12. Portrait - monochrome
4. Print “open” - colour	13. Print “open” - colour
5. Landscape/Seascape - colour	14. Landscape/Seascape - colour
6. Portrait- colour	15. Portrait - colour
7. Print “nature” - colour	16. Print “nature” - colour
8. Digitally manipulated prints	17. Digitally manipulated prints
9. Students with disabilities	18. Students with disabilities

### **Blacktown Council Awards \$25.00**

Best exhibit class 1-3 and class 10-12

Best exhibit class 4-7 and class 13-16

Best exhibit class 8 and class 17

Best exhibit class 9 and class 18

**Juniors check out the Special 100<sup>th</sup> Blacktown Show Photography competition**

**On page 28**

## **Section 10: PHOTOGRAPHY – AMATEUR - ADULT**

### **Conditions of entry**

1. All photographs to be taken by the exhibitor
2. All exhibits should be mounted on cardboard and ready to hang
3. Maximum of 5 entries per class
4. Minimum size including mount 12.5cm x 17.5cm
5. Maximum size including mount 40cm x 50cm
6. For collection of entries after the show see page 3.

### **Class**

19. Print “open” - monochrome
20. Landscape/Seascape - monochrome
21. Portrait - monochrome
22. Print “open” - colour
23. Landscape/Seascape - colour
24. Portrait - colour
25. Print “nature” - colour
26. Digitally manipulated prints
27. People with disabilities

### **Special 100<sup>th</sup> Blacktown Show Photography Competition**

#### **All 3 categories are for Junior and adult entrants**

#### **1. Spirit of Blacktown –**

Capture the spirit of Blacktown people having Fun, Celebrating, and sports. (Hint- Anzac Day – Australia Day -Blacktown Festival)

#### **2. Parks and open spaces of Blacktown.**

#### **3. Building and monuments in the City of Blacktown.**

(Obvious digital manipulation Permissible)

Photos must be taken within Blacktown boundaries – search for “Blacktown council Suburbs” or [www.blacktown.nsw.gov.au](http://www.blacktown.nsw.gov.au)

Name of the public location, with address and postcode written on the back of the mount.

#### **Blacktown Council Awards \$50.00**

Best exhibit class 19-21

Best exhibit class 22-25

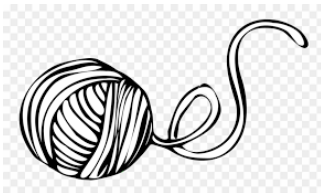
Best exhibit class 26

Best exhibit class 27

# Blacktown Art and Craft Group Inc.

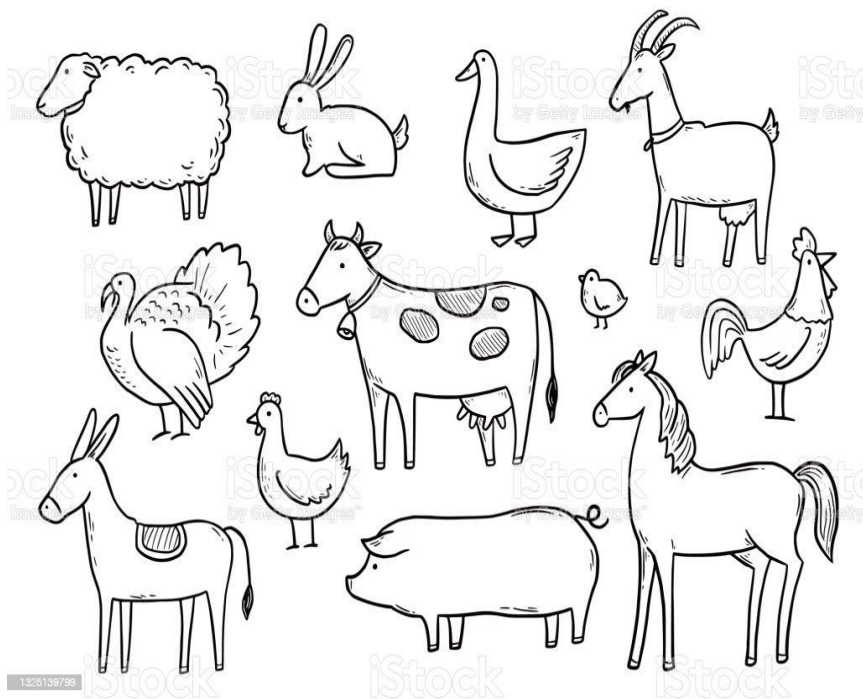
“The Trevor Toms Pavilion”  
Blacktown Showground  
Entry via Kent Street  
Phone 96227589  
PO Box 4063 Marayong NSW 2148

**Come and join one of our friendly groups.  
Incorporating the following interests, art, silk painting, pottery,  
mixed media, crochet, knitting, quilting and patchwork.**



## FREE CRAFT ACTIVITIES FOR KIDS

Enter our colouring-in competition



Template, pencils, textas and crayons will be provided.  
colour, decorate your picture leave it to be judged.

First place in preschool, primary and secondary levels \$10.00 prize.

**Prizes donated From Blacktown Arts and Craft Group.**

judging at 2 pm on Sunday and winners contacted.

All pictures can be collected after judging or collected on Tuesday, or  
Wednesday 9 am to 12 pm from Trevor Toms Pavilion.

## **Section 11: HORTICULTURE - JUNIOR**

### **Conditions of entry**

1. All exhibits are to be staged by 8:30 am.
2. Exhibition containers are supplied for cut flowers only. All cut flowers become the property of the society.
3. All exhibits must be grown by the entrant. Fruit and vegetables must be in a carton and suitably labelled.
4. All fruit and vegetables must be cut by the entrant prior to display.
5. Entries are judged by RAS rules.
6. Junior preschool to age 12.
7. Secondary 13 to 18 years.
8. ENTRIES BY PHONE

### **Making animals and things from fruit and/or vegetables**

#### **Class**

1. 5 years and under
2. 6-12 years
3. 13-18 years

#### **Primary - Plants in containers**

##### **Class**

4. One pot flowering plant
5. One pot foliage plant
6. Collection of 3 different succulents **in individual pots** or containers
7. Collection of 3 different cacti **in individual pots** or containers
8. One cut flower in a vase or container
9. One vase or container with 3 different flowering shrub or berry
10. Any seasonal fruit collection of 3
11. Any seasonal vegetable collection of 3
12. Any arrangement in any container type
13. Children with Disabilities

#### **Secondary – Plants in containers**

##### **Class**

14. One pot flowering plant
15. One pot foliage plant

16. Collection of 3 different succulents **in individual pots** or containers
17. Collection of 3 different cacti **in individual pots** or containers
18. One cut flower in a vase or container
19. One vase or container with 3 different flowering shrub or berry
20. Any seasonal fruit collection of 3
21. Any seasonal vegetable collection of 3
22. Any arrangement in any container type
23. Children with a disability

**School exhibits**

**Class**

24. Any display of seasonal fruits, vegetables or flowers {Primary}
25. Any display of seasonal fruits, vegetables or flowers {Secondary}

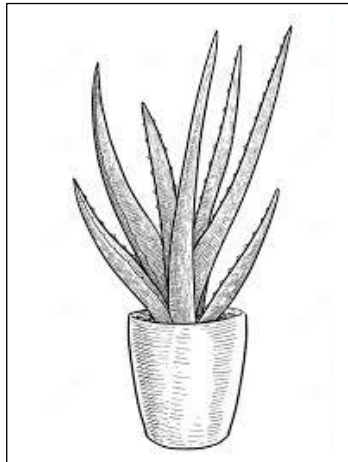
**Blacktown Council Awards \$25.00**

Best exhibit class 1-3

Best exhibit class 4-13

Best Exhibit class 14-23

Best exhibit class 24-25





## **SECTION 12: HORTICULTURE - ADULT**

### **Conditions of entry**

### **Late entries are not accepted**

1. All exhibits are to be staged by 8:30 am.
2. Exhibition containers are supplied for cut flowers only. All cut flowers become the property of the City of Blacktown show society.
3. All exhibits must be grown by the entrant. Fruit and vegetables must be in a carton and suitably labelled.
4. All fruit and vegetables must be cut by the entrant before display.
5. Entries are judged by RAS rules.
6. **Entries by phone Gretel 0409138453 close 9.30 pm Thursday 7/3/23**

### **DAHLIAS**

#### **Class**

26. Any display

### **ROSES**

#### **Class**

27. Blacktown Rose Championship consists of:
  - 1<sup>st</sup> place \$30 2<sup>nd</sup> place \$10
  - 3 Exhibition Roses, Distinct
  - 1 Vase of Bunch Roses,
  - 3 Stems, same variety,
  - and any 1 of the following:**
  - 1 Vase Floribunda consisting of 1-6 stems, or
  - 1 Vase Floribunda consisting of 10-25 florets, or
  - Bud to full bloom 4 stages, or
  - Vase of decorative roses, 3 stems same variety

#### **Note: Class 27 Awarded Rose Championship Ribbon**

28. 3 Exhibition Roses, Distinct
29. 3 Exhibition Roses, Any Color
30. 1 Exhibition Rose
31. 1 Vase Decorative Roses, three cuts, 1 cultivar
32. 1 Vase Roses, 'Bud to Full Bloom', 4 stages, bud to show colour
33. 1 Vase Roses, Floribunda, 1 to 6 cuts
34. Standard Unit, any other type
35. 1 Vase Roses, Miniature, 3 cuts, 1, 2 or 3 cultivars

## **MISCELLANEOUS FLOWERS**

### **Class**

- 36. 1 Vase of flower/s, 3 blooms or cuts, NND
- 37. 1 Vase of flower/s, 1 bloom or cut.

## **PLANTS IN CONTAINERS NOT EXCEEDING 250mm**

Foliage not to exceed 40cm diameter

### **Class**

- 38A, Succulent Garden
- 38B. 1 container of Fern/s
- 39. 1 container of Foliage Plant or Plants
- 40. 1 container of Flowering Plant/s
- 41. Collection of 3 Cacti **in Individual Pots**
- 42. Collection of 3 Succulents **in Individual Pots**

## **FLORAL DESIGN (Width 16"-41cm, Height 21"-54cm)**

### **Class**

- 43. Float bowl
- 44. Any festive arrangement
- 45. Reflection in a mirror
- 46. Any other floral arrangement
- 47. Modern arrangement with branches or foliage
- 48. Basket arrangement
- 49. Any Native floral/foliage arrangement

## **ORCHIDS**

### **Class**

- 50 Any Variety

## **FRUIT and VEGETABLES and HERBS**

### **Class**

- 51. Any seasonal vegetable, collection of 3
- 52. Collection of three different herbs in a **single container**
- 53. People with disabilities

Blacktown Council Awards \$50.00

Best exhibit class 26

Best exhibit class 27 – Rose Championship

Ribbon

Best exhibit class 28-35

Best exhibit class 36-37

Best Exhibit class 38-42

Best Exhibit class 43-49

Best Exhibit class 50

Best Exhibit class 51-53

**Entries Close Thursday 7<sup>th</sup> March 2023 - Open 10 am to 9.30 pm**

**Late Entries not accepted**



**Do you have a beautiful pet bird?**

**Enter it at the show  
Competition Saturday only  
Adult and Junior sections  
All enquiries and entries to Greg  
on 0419203237**



# **BLACKTOWN SHOW SOCIETY**

Play a part in your community and join us  
at the Blacktown City Show Society Inc.

We meet on the 4<sup>th</sup> Monday of each month  
at 7:30 pm in the Old Dining Room Hall,  
Blacktown Showground, Richmond Rd,  
Blacktown, entry via Kent St.

**All Enquiries To:**

**Mobile: 0421 626 898**

**Email: [blacktowncityshow@blacktownshow.au](mailto:blacktowncityshow@blacktownshow.au)**

**Website: [www.blacktownshow.au](http://www.blacktownshow.au)**

# **BLACKTOWN CITY COUNCIL**

## **SUPPORTING LOCAL ENDEAVOURS IN THE ARTS**

### **BRINGING OUR COMMUNITY TOGETHER**

62 Flushcombe Road  
Blacktown NSW 2148  
Phone: (02) 5300 6000  
[www.blacktown.nsw.gov.au](http://www.blacktown.nsw.gov.au)

**Blacktown City Show Society Inc. would like to thank  
all volunteers, stewards and judges including:**

BLACKTOWN CITY COUNCIL  
PHONE (02) 5300 6000

BLACKTOWN SHOW SOCIETY  
SHOWGROUNDS 0423 348 180

BLACKTOWN ARTS AND CRAFTS GROUP INC.  
PHONE: 96227589

Knitters Guild NSW Inc.  
PO Box 460  
Epping, NSW 2121  
[membership@knittersguildnsw.org.au](mailto:membership@knittersguildnsw.org.au)

INNER WHEEL  
PHONE: 0410594769

ROTARY CLUB BLACKTOWN  
PHONE: 0423 348 180

PAIN & WALLER SOLICITORS  
PHONE 98581444

CUMBERLAND WOODWORKERS INC  
PHONE 0403 771 386

**Thank you for your support**

**See you in 2025**